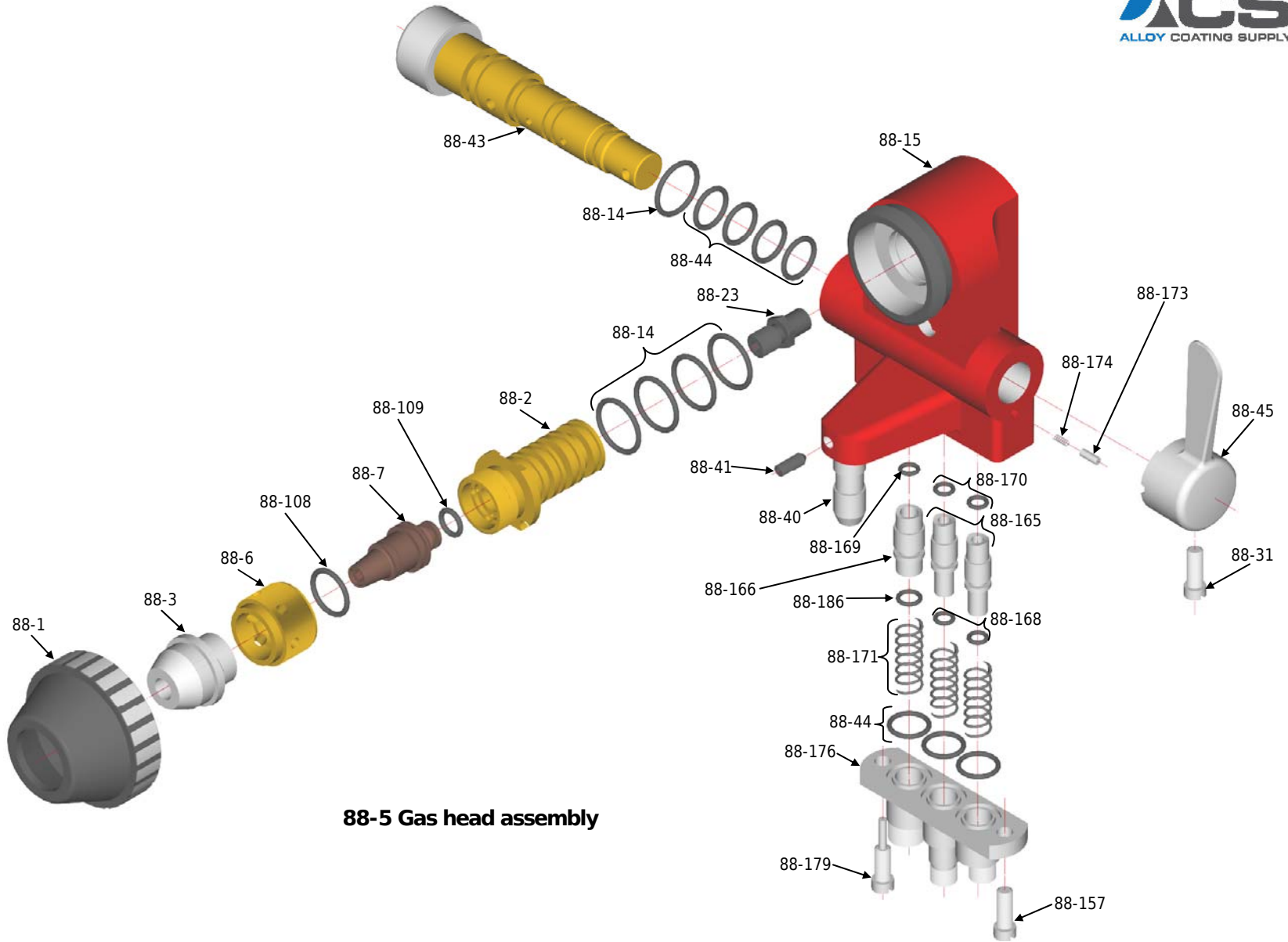


SPRAYJET 88 GUN REPLACEMENT SPARES



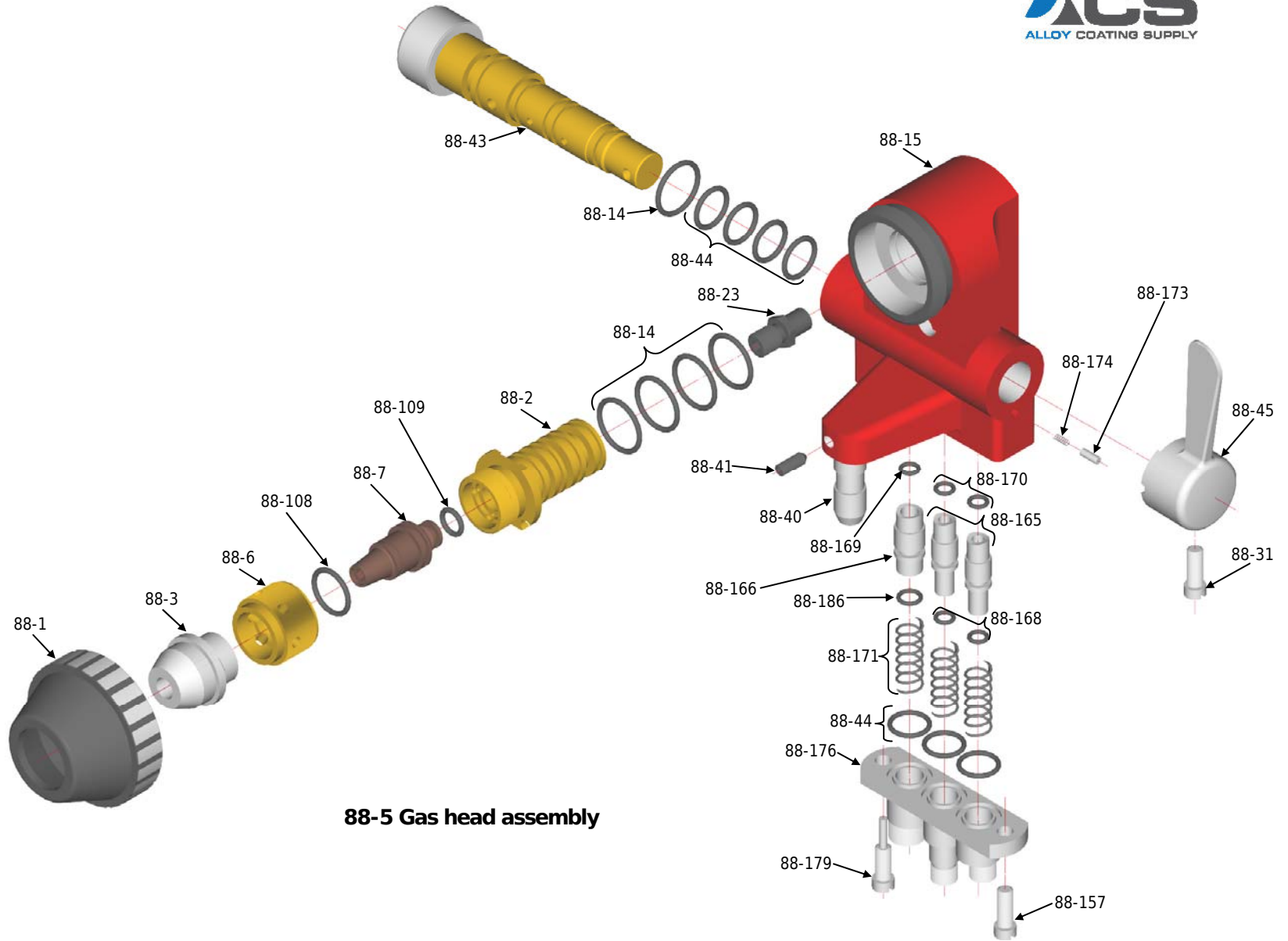
PART LIST OF SPRAJET 88 GUN



PART NO.	DESCRIPTION
88-1	Air Cap Body
88-5	Complete Gas Head Assembly
88-14	Valve Core "O" Ring/ Siphon Plug "O" Ring/ Counter Shaft "O" Ring
88-15	Gas Head Body (Includes 88-40 & 41)
88-31	Valve Handle Screw
88-40	Mounting Stud
88-41	Mounting Stud Roll Pin
88-43	Valve Core
88-44	Valve Core "O" Ring Small
88-45	Valve Handle assembly
88-96	Gas Head Mounting Screw, Rear (Not Shown)
88-97	Gas Head Mounting Screw, Front (Not Shown)
88-157	Hose Connection Block Mounting Screw
88-165	Plunger (Fuel Gas & Oxygen)
88-166	Plunger (Air)
88-186	Plunger "O" Ring (Air)
88-168	Plunger "O" Ring (Fuel Gas & Oxygen)
88-169	Plunger Seal "O" Ring (Air)
88-170	Plunger Seal "O" Ring (Fuel Gas & Oxygen)
88-171	Plunger Spring
88-173	Detent Pin

PART NO.	DESCRIPTION
88-174	Detent Pin Spring
88-176	Hose Connection Block
88-179	Valve Core Stop Screw
88-184	Gas Head Valve "O" Ring Package (Not Shown) (Consists Of A Complete Set Of Spare "O" Rings For 88-5 gas head)
88-3-C	C Air Cap
88-3-CH	CH Air Cap
88-3-EA	EA Air Cap
88-3-EC	EC Air Cap
88-3-J	J Air Cap
88-3-JH	JH Air Cap
88-3-N	N Air Cap
88-3-M	M Air Cap
88-3-MH	MH Air Cap
88-6	Nozzle Nut
88-108	Nozzle 'O' ring (LARGE)
88-109	Nozzle 'O' ring (SMALL)
88-7-25	Nozzle 1/8" -MPS (2)
88-7-26	Nozzle 1/8", acetylene, non load (2)
88-7-27	Nozzle 1/8", propane, non load (2)
88-7-29	Nozzle 15 Ga, acetylene (2)
88-7-30	Nozzle 15 Ga, acetylene non load (2)

SPRAYJET 88 GUN REPLACEMENT SPARES



88-5 Gas head assembly

PART LIST OF SPRAJET 88 GUN



PART No.	DESCRIPTION
88-7-32	Nozzle 15 Ga, propane non load (2)
88-7-35	Nozzle 11 Ga, acetylene (2)
88-7-36	Nozzle 11Ga, acetylene non load (2)
88-7-37	Nozzle 11 Ga, propane (2)
88-7-38	Nozzle 11 Ga, propane non load (2)
88-7-41	Nozzle 11 Ga, SPRAYBOND (2)
88-7-42	Nozzle 3/16", acetylene (2)
88-7-43	Nozzle 3/16", propane (2)
88-7-46	Nozzle 3/16", propane non load (2)
88-7-48	Nozzle 1/8", acetylene (2)
88-7-49	Nozzle 1/8", propane (2)
88-2-5	Siphon Plug, Acetylene (large gauge) (2)
88-2-6	Siphon Plug, propane (large gauge) (2)
88-2-7	Siphon Plug, Acetylene (small gauge) (2)
88-2-8	Siphon Plug, Propane (small gauge) (2)

PART No.	DESCRIPTION
88-14	Siphon Plug "O" Ring / Valve Core "O" Ring / Counter Shaft "O" Ring
88-23-3/16"	Front Wire Guide (3/16"-1/8")
88-23-1/8"	Front Wire Guide (1/8"-11 Ga)
88-23-15 Ga	Front Wire Guide, 15-20 Ga
88-23-1.6	Front wire guide, 1.6 mm
88-200-1	Siphon Plug Assembly, 3/16" Acetylene (2,5)
88-200-2	Siphon Plug Assembly, 1/8" Acetylene (2,5)
88-200-3	Siphon Plug Assembly, 11 Ga Acetylene (2,5)
88-190	Siphon plug & nozzle O-ring package (includes 88-14,108 & 109)

NOTE:- See gas head hardware selection chart

1. when ordering siphon plugs, air caps & nozzles specify wire size and fuel gas.
2. Jetted
5. includes siphon plug, nozzle, O-rings, nozzle nut, front wire guide

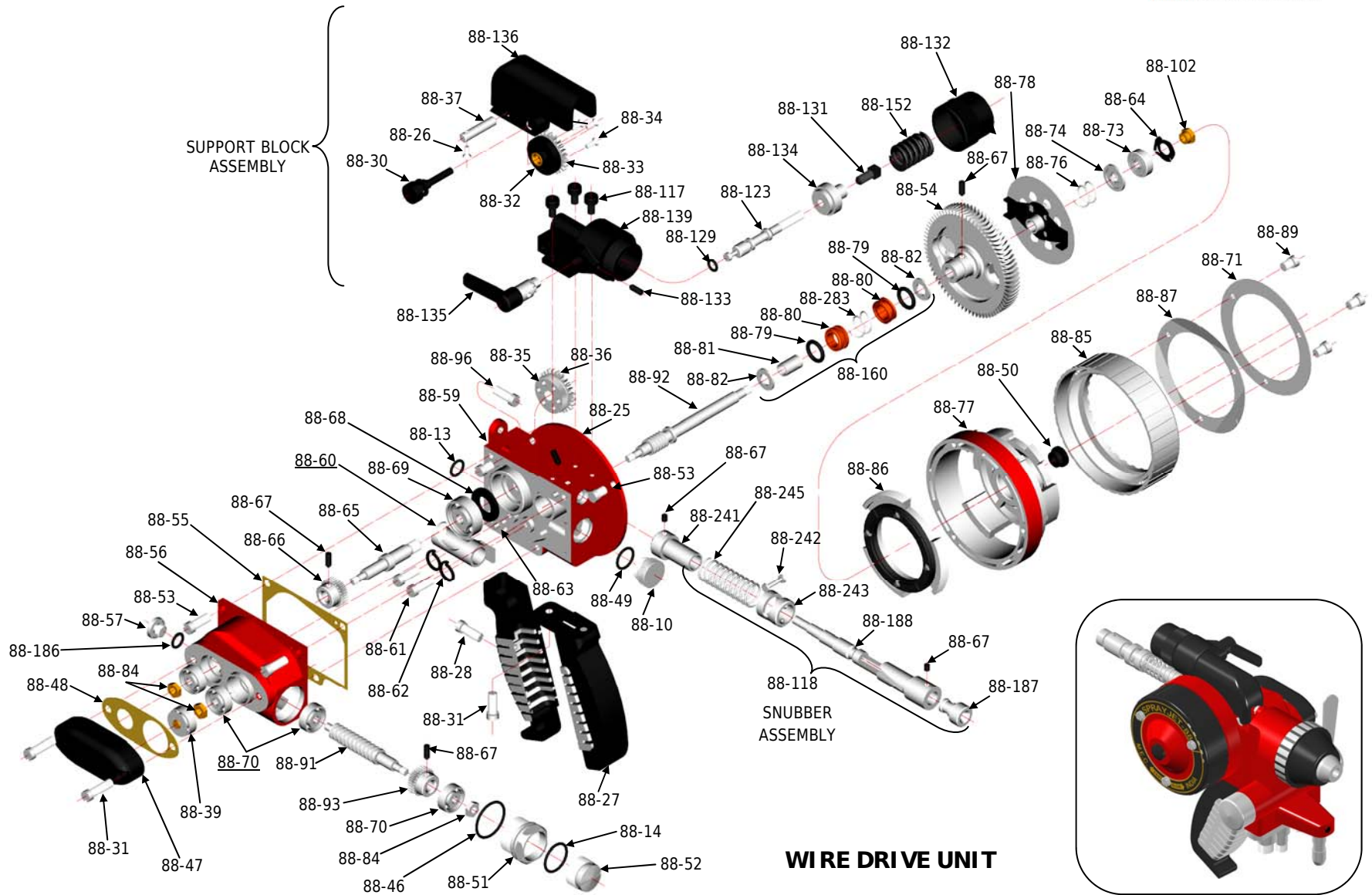
PART LIST OF SPRAJET 88 GUN



PART No.	DESCRIPTION
88-25	Set Screw For Rear Wire Guide
88-31	Bearing Cover Mounting Screw
88-35-3/16"	Lower Drive Roll – 3/16"–1/8"
88-35-1/8"	Lower Drive Roll – 1/8"–11 Ga
88-35-15	Lower Drive Roll – 15–20 Ga
88-35-1.6	Lower Drive Roll – 1.6m
88-36-3/16"	Lower Drive Gear – 3/16"–1/8"
88-36-1/8"	Lower Drive Gear – 1/8"–20 Ga
88-32-3/16"	Upper Drive Roll 3/16"
88-32-18	Upper Drive Roll 18–20 Ga
88-32-1/8"	Upper Drive Roll 1/8"
88-33	Upper Drive Roll Gear
88-26	Upper drive roll axle screw
88-30	Drive roller carrier pivot pin
88-30A	Spring for 88-30 (not shown)
88-34	Upper Drive Roll Gear Screw
88-37	Upper Drive Roll Axle
88-123	Push Rod
88-129	Push Rod Seal
88-131	Push Rod Locking Screw
88-132	Spring Cap
88-133	Cam Bushing Set Screw

PART No.	DESCRIPTION
88-134	Cam Follower
88-135	Cam Assembly
88-136	Drive Roll Carrier
88-139	Support Block
88-152	Spring
88-117	Support Block Mounting Screw
88-84	Nut For Left Bearing
88-85	Control Ring
88-86	Spider Assembly
88-87	Detent Spring
88-89	Screw For Ring Name Plate
88-92-S	Turbine Shaft, Standard
88-92-H	Turbine Shaft, High Speed
88-102	Turbine Shaft Nut
88-160	Oil Seal Assembly (Incl. 88-79, 80, 81, 82 & 283)
88-186	Plug Screw "O" Ring
88-283	OIL SEAL SPRING (Not Shown)
88-10	Oil Sight Plug
88-13	"O" Ring
88-14	Counter Shaft Plug "O" Ring/ Siphon Plug "O" Ring/ Valve Core

SPRAYJET 88 GUN REPLACEMENT SPARES



PART LIST OF SPRAJET 88 GUN



PART No.	DESCRIPTION
88-27	Gun Handle (Incl. 88-28)
88-28	Gun handle screw (Not Shown)
88-31	Gun Handle Mounting Screw
88-46	Bearing Retainer "O" Ring
88-49	Oil Sight plug O-ring
88-51	Rear Bearing Retainer
88-52	Counter Shaft Plug
88-55	Gear Cover Gasket
88-56	Gear Cover
88-59	Central Housing (Incl. 88-13, 60, 61, 62 & 63)
88-60	Pump Housing
88-61	Pump Housing Mounting Screw
88-62	Pump Housing Lock Washer
88-63	Dowel Pin For Mounting Gear Cover
88-65	Drive Shaft
88-66	Drive Shaft Gear
88-67	Gear Set Screw
88-68	Drive Shaft Seal
88-69	Right Ball Bearing For Drive Shaft
88-70	Front And Rear Ball Bearing For Counter Shaft, Left Ball Bearing For Drive Shaft & Ball Bearing For Turbine Shaft
88-84	Nut For Counter Shaft Front Bearing

PART No.	DESCRIPTION
88-91	Counter Shaft
88-93-S	Counter shaft gear, standard
88-93-H	Counter shaft gear, high speed
88-118-3/16"	Snubber Assembly - 3/16"-1/8"
88-118-1/8"	Snubber Assembly - 1/8" - 11 Ga
88-118-15	Snubber Assembly - 15-20 Ga
88-187-3/16"	Guide Insert - 3/16"-1/8"
88-187-1/8"	Guide Insert - 1/8"-11 Ga
88-187-15	Guide Insert - 15-20 Ga
88-188-3/16"	Snubbing Guide - 3/16"-1/8"
88-188-1/8"	Snubbing Guide - 1/8"-11 Ga
88-188-15	Snubbing Guide - 15-20 Ga
88-241	Spring Retainer
88-242	Roller
88-243	Spring Housing
88-245	Spring
88-143	Strain relief assembly (not shown)
88-144	Bushing (not shown)
88-163	Spring (not shown)
88-24-3/16"	Rear guide assembly, 3/16"-1/8" (plain) (not shown)
88-24-1/8"	Rear guide assembly, 1/8"-11 Ga (plain) (not shown)

PART LIST OF SPRAJET 88 GUN



PART No.	DESCRIPTION
88-24-15	Rear guide assembly, 15 Ga (plain) (not shown)
88-140	Rear wire guide 3/16"-1/8" (plain) (not shown)
88-141	Rear wire guide 1/8"-11 Ga (plain) (not shown)
88-39	Bearing follower sub-assembly
88-47	Bearing Cover
88-48	Bearing Cover Gasket
88-50	Oil Plug Screw
88-53	Gear Cover Screw / Turbine Cover Screw
88-54	Turbine Rotor (Includes 88-67)
88-57	Plug Screw
88-64	Finger Spring
88-67	Setscrew For Turbine Rotor
88-71	Ring Name Plate
88-73	Right Ball Bearing For Turbine Shaft
88-74	Washer For Brake Disc Return Spring
88-76	Brake disc return spring
88-77	Turbine cover
88-78	Brake disc
88-79	O-ring
88-80	Oil seal bobbin
88-81	Oil seal sleeve
88-82	Oil seal washer